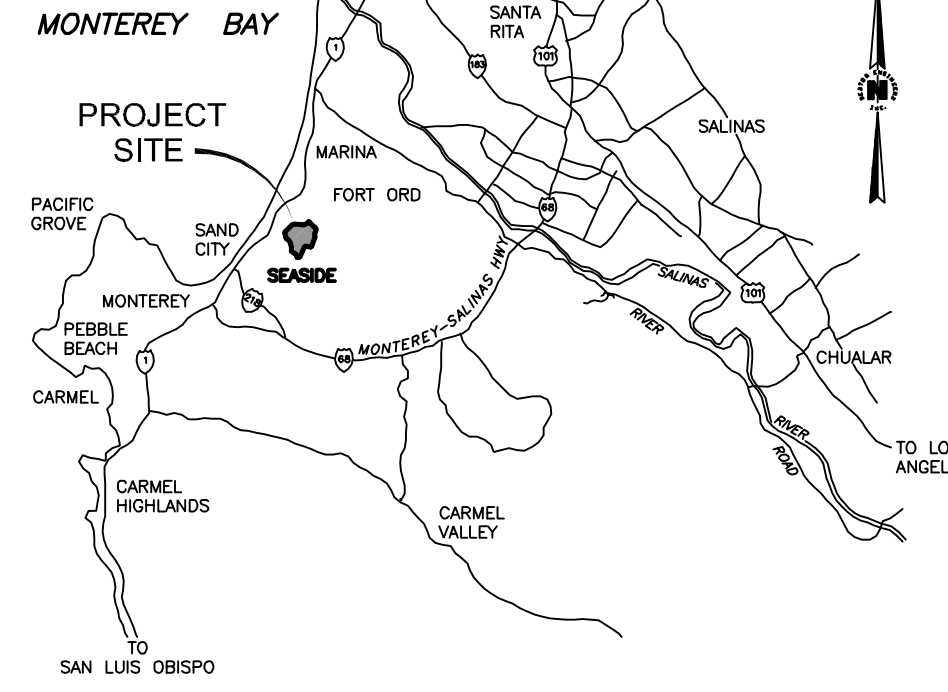
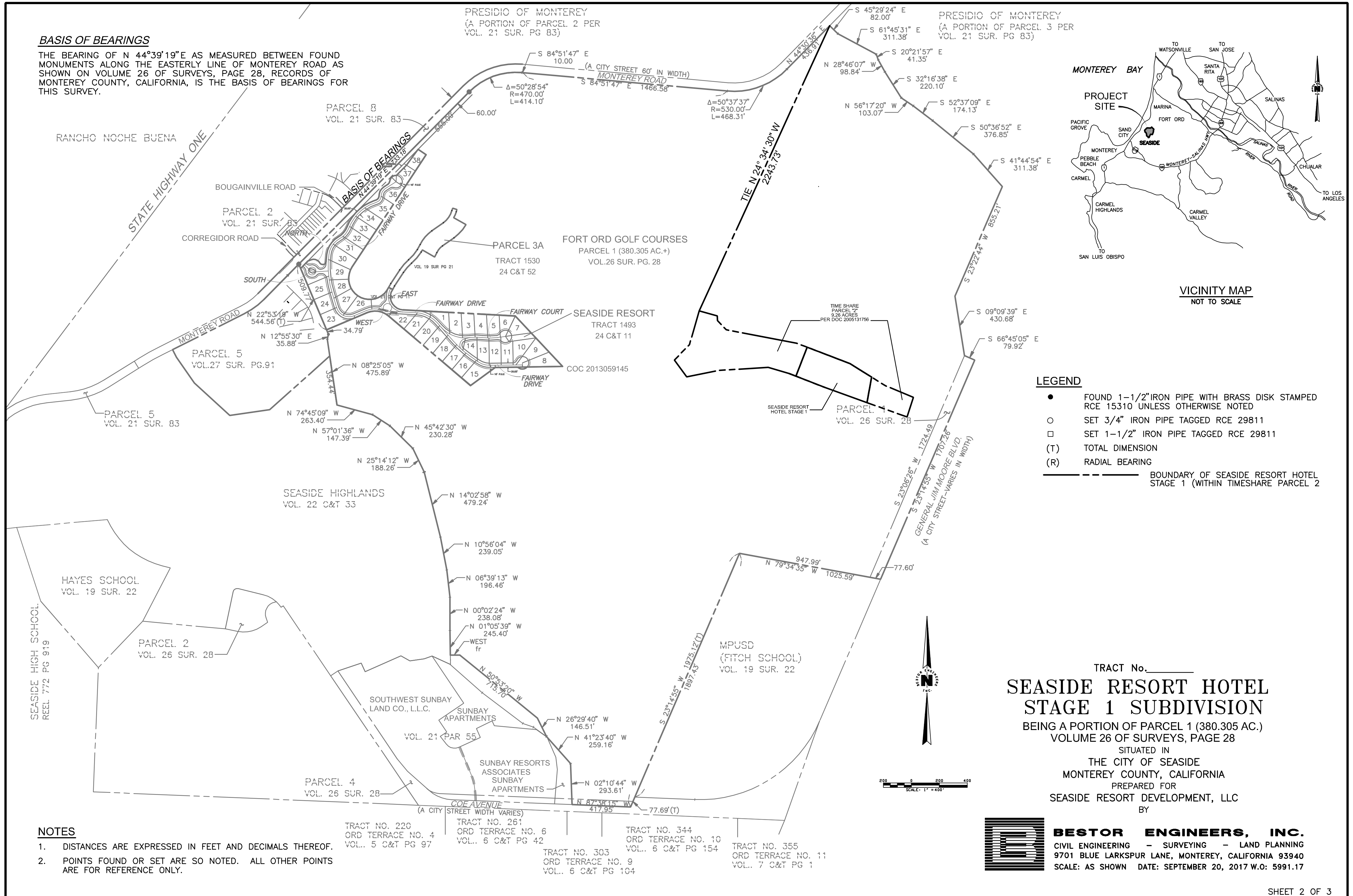


BASIS OF BEARINGS

THE BEARING OF N 44°39'19"E AS MEASURED BETWEEN FOUND MONUMENTS ALONG THE EASTERLY LINE OF MONTEREY ROAD AS SHOWN ON VOLUME 26 OF SURVEYS, PAGE 28, RECORDS OF MONTEREY COUNTY, CALIFORNIA, IS THE BASIS OF BEARINGS FOR THIS SURVEY.

PRESIDIO OF MONTEREY
(A PORTION OF PARCEL 2 PER
VOL. 21 SUR. PG 83)

PRESIDIO OF MONTEREY
(A PORTION OF PARCEL 3 PER
VOL. 21 SUR. PG 83)



- LEGEND**
- FOUND 1-1/2" IRON PIPE WITH BRASS DISK STAMPED RCE 15310 UNLESS OTHERWISE NOTED
 - SET 3/4" IRON PIPE TAGGED RCE 29811
 - SET 1-1/2" IRON PIPE TAGGED RCE 29811
 - (T) TOTAL DIMENSION
 - (R) RADIAL BEARING
- BOUNDARY OF SEASIDE RESORT HOTEL STAGE 1 (WITHIN TIMESHARE PARCEL 2)

TRACT No. _____
**SEASIDE RESORT HOTEL
 STAGE 1 SUBDIVISION**
 BEING A PORTION OF PARCEL 1 (380.305 AC.)
 VOLUME 26 OF SURVEYS, PAGE 28
 SITUATED IN
 THE CITY OF SEASIDE
 MONTEREY COUNTY, CALIFORNIA
 PREPARED FOR
 SEASIDE RESORT DEVELOPMENT, LLC
 BY

- NOTES**
- DISTANCES ARE EXPRESSED IN FEET AND DECIMALS THEREOF.
 - POINTS FOUND OR SET ARE SO NOTED. ALL OTHER POINTS ARE FOR REFERENCE ONLY.

- TRACT NO. 220
ORD TERRACE NO. 4
VOL. 5 C&T PG 97
- TRACT NO. 261
ORD TERRACE NO. 6
VOL. 6 C&T PG 42
- TRACT NO. 303
ORD TERRACE NO. 9
VOL. 6 C&T PG 104
- TRACT NO. 344
ORD TERRACE NO. 10
VOL. 6 C&T PG 154
- TRACT NO. 355
ORD TERRACE NO. 11
VOL. 7 C&T PG 1

BESTOR ENGINEERS, INC.
 CIVIL ENGINEERING - SURVEYING - LAND PLANNING
 9701 BLUE LARKSPUR LANE, MONTEREY, CALIFORNIA 93940
 SCALE: AS SHOWN DATE: SEPTEMBER 20, 2017 W.O.: 5991.17